




# Quick Installation Guide

## Wireless 4G LTE Router

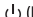




Images may differ from actual products.

©2026 TP-Link 7100003002 REV1.1.0

## 2. Verify the Hardware Connection

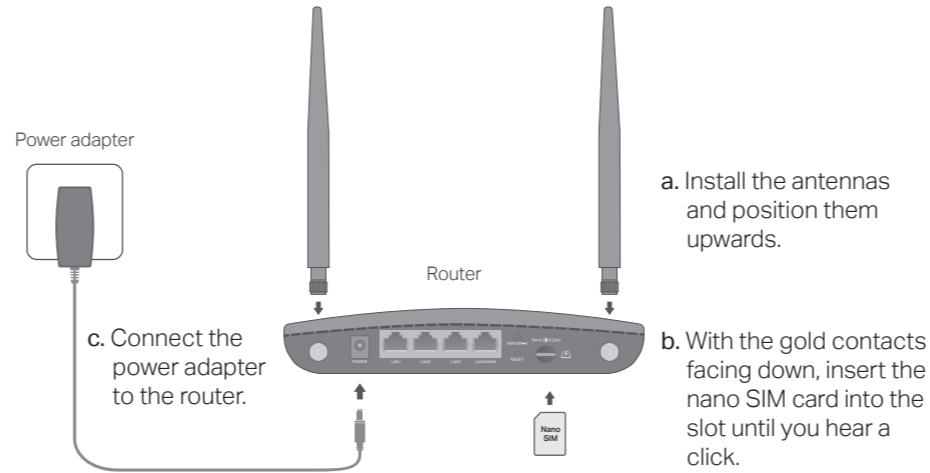
Check the LEDs' status. If the Internet LED  is on, your router is connected to the internet successfully.

Note: If the Internet LED does not turn on, please refer to **Need Help? > Q2** on the back page.

LED	Status	Indication
 (Power)	On/Off Flashing	Power is on or off. The system is starting up or firmware is being upgraded. Do not disconnect or power off your modem router.
 (Internet)	On/Off	Internet service is available or unavailable.
 (Wi-Fi)	On/Off Flashing	Wi-Fi is enabled or disabled. WPS connection is in progress. This may take up to 2 minutes.
 (LAN)	On Off	At least one LAN port is connected. No LAN port is connected or LAN port is not connected properly.
 (Signal Strength)	On Off	Indicates the signal strength received from the mobile internet network. More lit bars indicates a better signal strength. There is no mobile internet signal.

Note: For better internet connection, make sure 2 or 3 bars of the Signal Strength LED  are lit.

## 1. Connect the Hardware



## 3. Enjoy the Internet

### • Wired

Connect your computer to the router's LAN port via an Ethernet cable.

### • Wireless

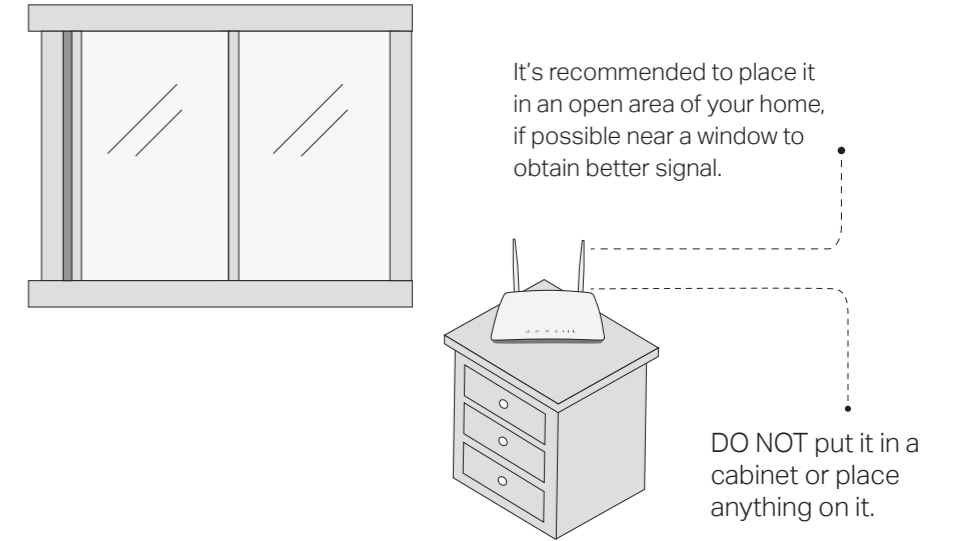
a. Find the SSID (network name) and wireless password printed on the label at the bottom of the router.

Note: Images are for demonstration only. For a dual-band router, you can find two default SSIDs. Choose one to join the Wi-Fi.



b. Click the network icon of your computer or go to Wi-Fi settings of your smart device, and then select the SSID to join the network.

## ! Recommended Position



## Configure the router via Tether App

The TP-Link Tether app provides a simple, intuitive way to access and manage your router.



### How to begin?

1. Download the TP-Link Tether app.



2. Open the Tether app and log in with your TP-Link ID.

Note: If you don't have an account, create one first.

3. Tap the + icon in the Tether app and select **Add a Router**.

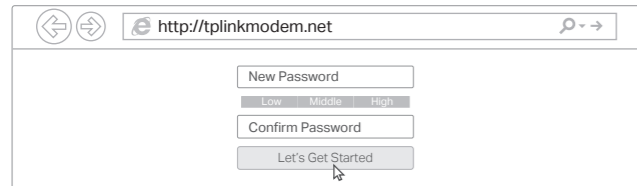
Follow the steps to complete the setup and connect to the internet.

Note: Due to Tether app updates, your actual user interface and pathway may differ from those depicted here.

# Customize the 4G LTE Router

1. Make sure your computer is connected to the router (wired or wireless).
2. Launch a web browser and type in <http://tplinkmodem.net> or <http://192.168.1.1>. Create a new password for future logins.

Note: If the login page does not appear, please refer to [Need Help? > Q1](#) in this guide.



The screenshot shows a web browser window with the address bar containing <http://tplinkmodem.net>. The main content area displays a form for creating a new password. It includes a text input field labeled "New Password", a strength indicator with "Low", "Middle", and "High" options, a "Confirm Password" text input field, and a "Let's Get Started" button. A mouse cursor is pointing at the "Let's Get Started" button.

3. Follow the step-by-step instructions of the **Quick Setup** to complete the initial configuration.

Note: The router can also be used (or configured) in Wireless Router Mode for DSL/Cable connections. For more advanced configurations, please refer to the user guide on TP-Link official website at [www.tp-link.com](http://www.tp-link.com).

## EU Declaration of Conformity

TP-Link hereby declares that the Wireless 4G LTE Router is in compliance with the essential requirements and other relevant provisions of directives 2014/53/EU, 2009/125/EC, 2011 /65/EU and (EU) 2015/863.

The original EU declaration of conformity may be found at <https://www.tp-link.com/en/support/ce/>


## UK Declaration of Conformity

TP-Link hereby declares that the Wireless 4G LTE Router is in compliance with the essential requirements and other relevant provisions of the Radio Equipment Regulations 2017.

The original UK declaration of conformity may be found at <https://www.tp-link.com/support/ukca/>

## Safety Information

- Keep the device away from water, fire, humidity or hot environments.
- Do not attempt to disassemble, repair, or modify the device. If you need service, please contact us.
- Do not use damaged charger or USB cable to charge the device.
- Do not use any other chargers than those recommended.
- Do not use the device where wireless devices are not allowed.
- Adapter shall be installed near the equipment and shall be easily accessible.
- Use only power supplies listed in the user instructions. Refer to the User Manual on the product support page.

 For technical support, replacement services, user guides, and other information, please visit <https://www.tp-link.com/support>, or simply scan the QR code.



# Need Help?

## Q1. What should I do if I cannot access the web management page?

- Reboot your router and try again.
- If the computer is set to a static IP address, change its settings to obtain an IP address automatically.
- Make sure <http://tplinkmodem.net> or <http://192.168.1.1> is correctly entered in the web browser.
- Use another web browser and try again.
- Disable and enable the active network adapter in use.

## Q2. What should I do if I cannot access the internet?

- Verify that your SIM card is an LTE or WCDMA card.
- Verify that your SIM card is in your internet service provider's service area.
- Verify that your SIM card has sufficient credit.
- Launch a web browser, log in to the web management page, and check the following:
  - 1) Go to **Advanced > Network > PIN Management** to verify if PIN is required. If it is, enter the correct PIN provided by your ISP, and click Save.

- 2) Go to **Advanced > Network > Internet** to verify the parameters provided by your ISP are correctly entered. If the parameters are incorrect, click **Create Profile** and enter the correct parameters, then select the new profile from the **Profile Name** list.
- 3) Go to **Advanced > Network > Data Settings** to verify if the **Total/Monthly Used** exceeds the **Total/Monthly Allowance**. If it does, click **Correct** and set **Total/Monthly Used** to 0 (zero), or disable **Data Limit**.
- 4) Go to **Advanced > Network > Internet** to verify that **Mobile Data** is enabled. If it is not, enable it to access the internet.
- 5) Confirm with your ISP if you are in a roaming service area. If you are, go to **Advanced > Network > Internet** to enable **Data Roaming**.

## Q3. How do I restore the router to its factory default settings?

- With the router powered on, press and hold the **RESET** button on the rear panel of the router until the Power LED starts flashing, then release the button. Wait until the router reboots.
- Log in to the web management page of the router, and go to **Advanced > System Tools > Backup & Restore**, click **Factory Restore** and wait until the reset process is complete.

## Q4. What should I do if I forget my web management page password?

- If you are using a TP-Link ID to log in, click **Forgot password** on the login page and then follow the instructions to reset it.
- Refer to [Q3](#) to reset the router, then create a new password to log in.

## Q5. What should I do if I forget my wireless network password?

- The default wireless password is printed on the product label of the router.
- Connect a computer directly to the router via an Ethernet cable. Log in to the router's web management page and go to **Basic > Wireless** to retrieve or reset your wireless password.

## Q6. How should I position my router for optimal network connection?

- Don't place your router in a corner or in a closet.
- Avoid obstacles and high-powered appliances.
- Keep your router in a higher location, ideally near a window.

